

A photograph of the Maitland No. 1 Sportsground. The image shows a large, modern stadium with a wide, covered seating area. The seats are arranged in tiers and are colored in shades of green and white. The stadium is situated on a grassy field. In the background, there are trees and a tall stadium light pole. The sky is bright blue with scattered white clouds and a bright sun in the upper right corner.

Maitland No. 1 Sportsground

maitland
city council

Welcome to Maitland No. 1 Sportsground

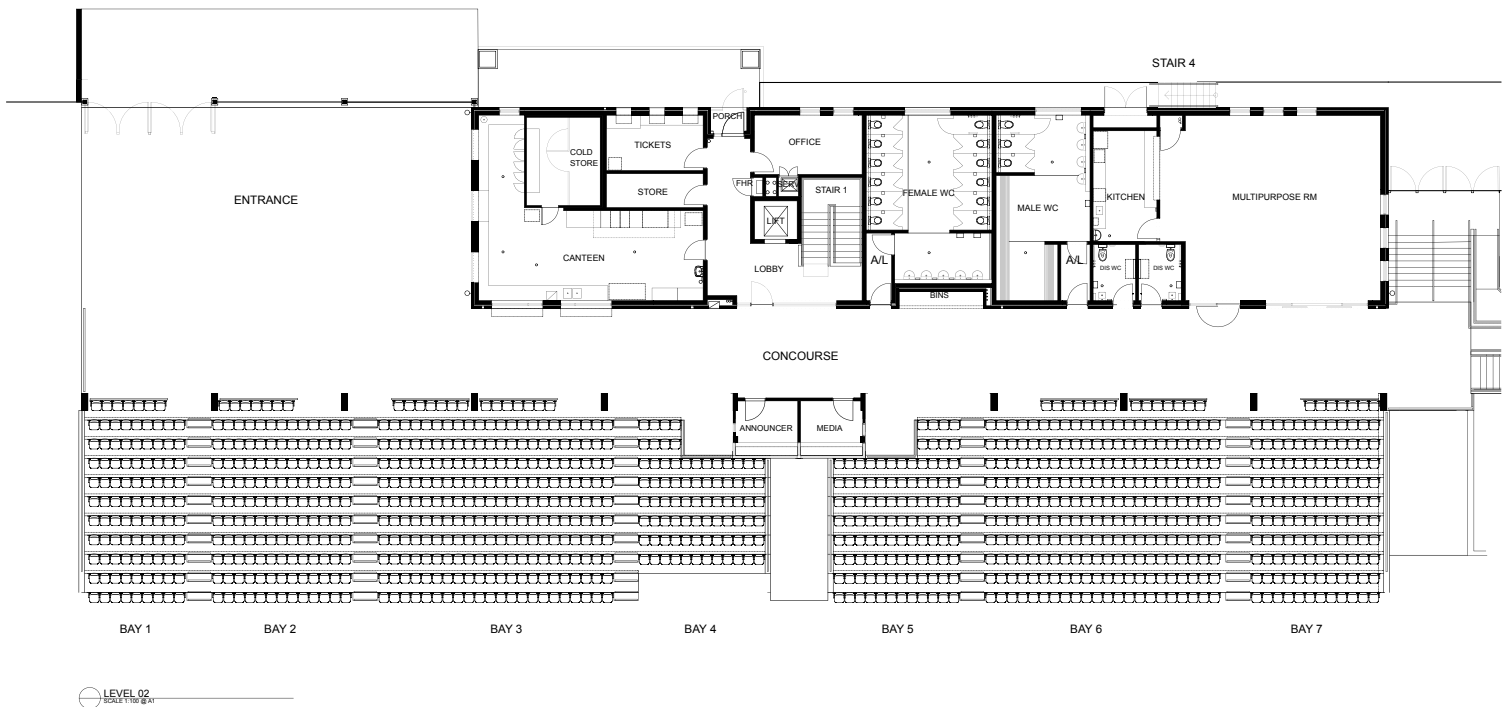
Following ten months of construction the site's new 1,100 seat grandstand has been completed earlier than expected. The facility features improved access and a significantly enhanced view of the playing field. Within the new grandstand there are also four change rooms that can be partitioned off to make two large change rooms, as well as high quality public amenities and a commercial standard canteen that will cater for a range of sporting and community events. The facility has an accessible entrance, accessible parking bays (four), designated accessible toilets and lift access to the playing field and downstairs.

The Maitland Regional Sportsground Complex (Stage 1) - Grandstand Redevelopment was jointly funded by the Hunter Infrastructure and Investment Fund (HIIF) and Maitland City Council. The total cost of the project is \$8.6 million with the HIIF grant contributing \$5.6 million towards its completion. Construction was lead by North Construction.

These upgrades provide vastly improved conditions for players and spectators, and will offer an attractive option for hosting regional and state events in the future.



Grandstand lower level floorplan



Grandstand upper level floorplan

HISTORY

Following on with the tradition from the previous grandstand to pay tribute to the 1955 flood, the flood level is identified on the lift lobby window.



The dark and light colours in the main grandstand roof reflect the traditional black and white colours of many of Maitland's sporting teams, including the Maitland Pumpkin Pickers Rugby League team. The external bricks were selected to reflect the brick finish of the former grandstand buildings, while the green seat colours are inspired from an old Maitland Pumpkin Pickers logo.



INTERESTING FACTS

- 1,100 person capacity grandstand
- Under the field is an extinct river bed that changed course in the late 19th Century
- The grandstand sits on a foundation of 44 concrete pylons that are approximately 30m deep
- The grass is a couch variety known as 'Grand Prix'
- Total size of the field is 16,260m²
- Three Design Architects worked on this project, one each from Maitland City Council Infrastructure Projects and Building Services, NSW Government Architects Office and CKDS Architecture.



'Grand Prix' turf

THE MULTIPURPOSE ROOM

The lower level features a 55 person capacity multipurpose room. The room includes zip hot water for tea and coffee, small kitchenette area with service window to meeting room, dishwasher, fridge, microwave, crockery, cutlery, glassware, rectangle tables, chairs, pa system and tv screen.



Main entrance



maitland
city council

285 - 287 High Street
Maitland NSW 2320

t 02 4934 9700
f 02 4933 3209

info@maitland.nsw.gov.au
maitland.nsw.gov.au