

A photograph of the Maitland Regional Athletics Centre. The foreground is dominated by a red running track with white lane markings and numbers. In the background, there are concrete bleachers with a dark, peaked roof structure. Tall stadium light towers are visible against a cloudy sky.

Maitland Regional Athletics Centre

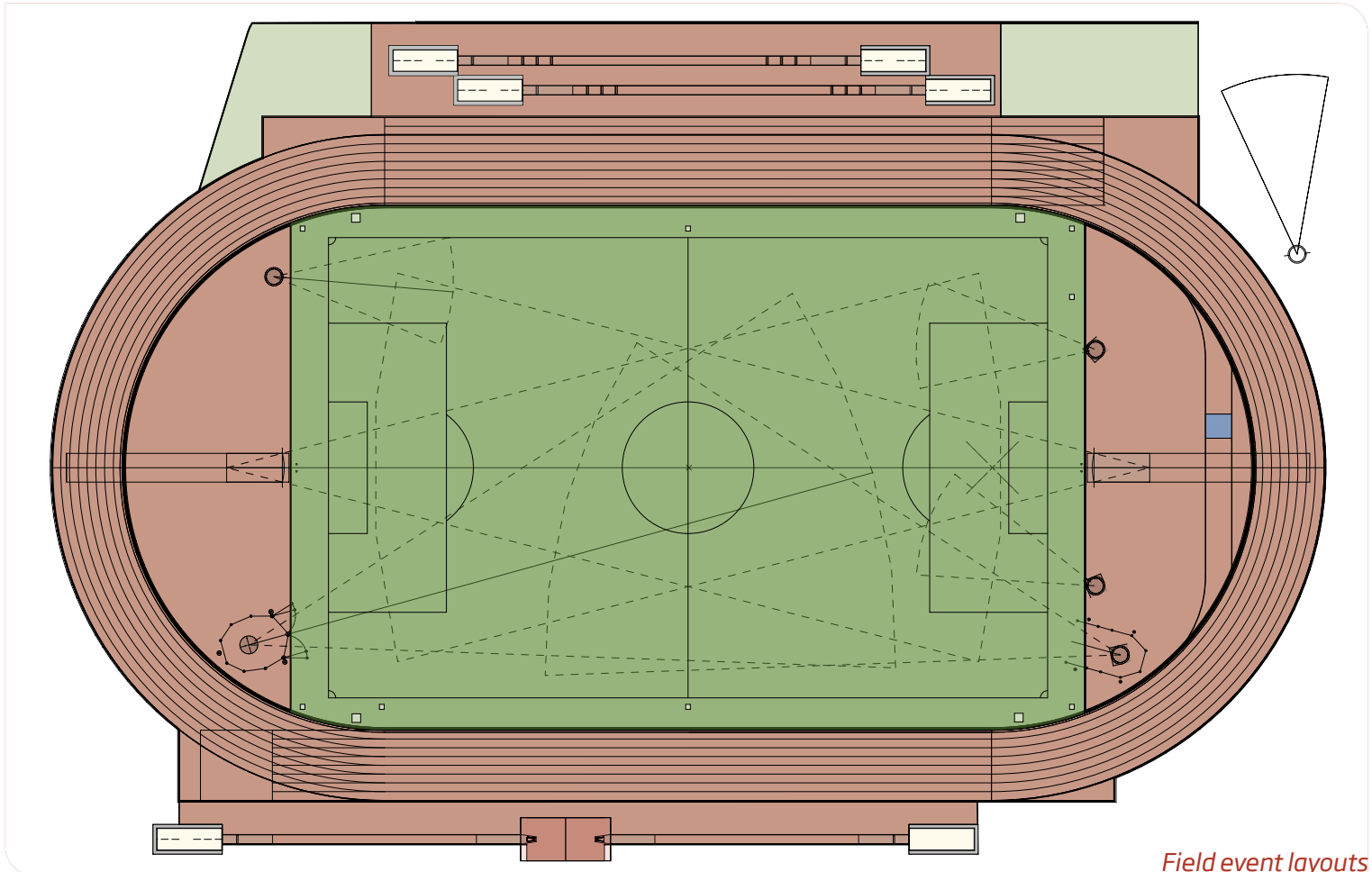
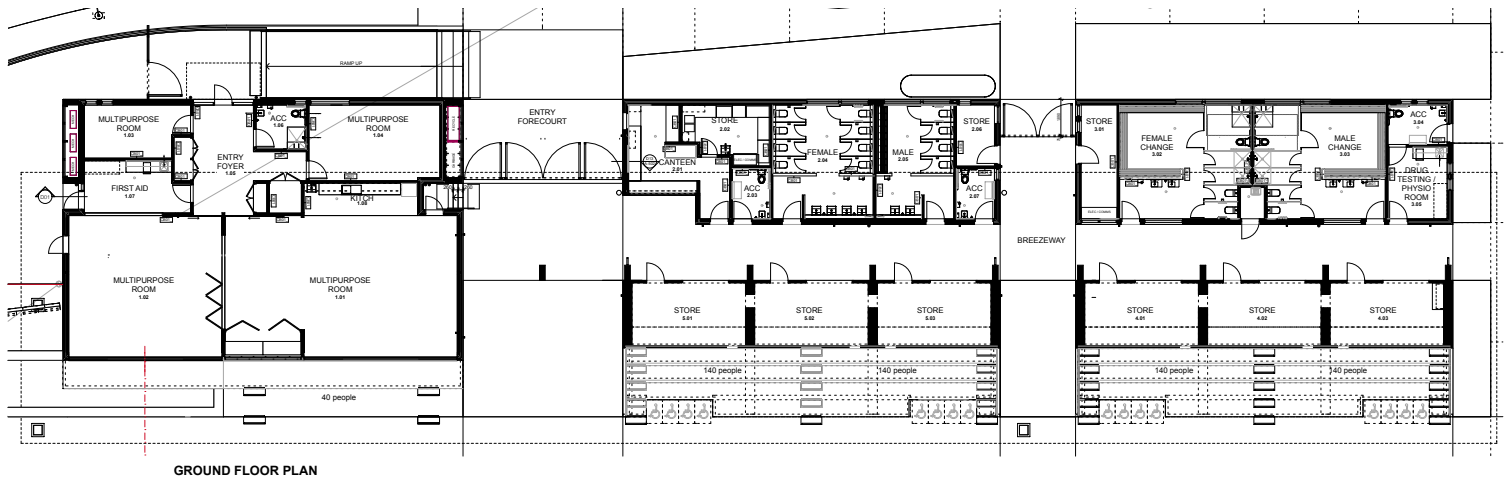
maitland
city council

Welcome to the Maitland Regional Athletics Centre

Following 11 months of construction, the Maitland Regional Sports Complex redevelopment has included the construction of a synthetic athletics track, and complimentary track and field facilities, floodlighting, a grandstand with capacity of 560, changerooms, canteen, two large function spaces and internal roadworks and car parking. The facility is fully accessible with features such as an accessible entrance, accessible parking bays (six) and designated area within the grandstand with a fully accessible track.

The Maitland Regional Sports Complex (Stage 2) was awarded \$5.5 million under the NSW Government's Restart NSW fund, specifically the Hunter Infrastructure Investment Fund. Maitland City Council contributed a further \$5 million to the Maitland Regional Sports Complex and managed the redevelopment project. Construction was led by Graph Construction.

This new regional venue provides vastly improved conditions for athletes and spectators and will offer an attractive option for hosting zone, regional and state events in the future.



WORLD ATHLETICS APPROVED

The Maitland Regional Athletics Centre has an International Amateur Athletic Federation (IAAF) Class 2 Certification by World Athletics. An IAAF Class 2 Athletics Facility Certificate is for competition facilities where the synthetic surface has a valid IAAF Product Certificate and where the facility conforms to the stringent requirements for accurate measurement contained in the IAAF Competition Rules.



SMARTTRACK TECHNOLOGY

This World Class Athletics facility has the technology of Polytan SmarTracks system that consists of timing gates that are invisibly integrated into various track sensors to allow for amateur athletes who want to optimise their training using digital performance diagnostics. To access this free technology download the SmarTrack App from Google Play or the App Store for iOS devices.



When you have your smartphone in a standard running belt in the lumbar area, the software can use the sensors present in the smartphone in an optimal manner and record all relevant parameters using the SmarTracks timing gates. The data can be evaluated and analysed directly in the app. SmarTrack technology is located in lanes 1, 2, 5 and in the two long jump pits.

VENUE INFORMATION

- Grandstand capacity: 560
- Additional seating areas: 40 capacity under cover in front of the multipurpose rooms, 134 capacity on the grassed area south of the multipurpose room, 106 capacity on the grassed area to the north of the forecourt, 407 capacity on the grassed area north of the track. Total capacity is 687
- Accessible entrance and changerooms
- Large multipurpose room to seat 100 capacity. The room can also be split into two smaller rooms
- Two air conditioned offices with hot desks for coaches, trainers, athletes or sporting bodies
- Canteen
- Physio room
- All athletics equipment is available on site
- Two water misting stations located around the track for athletes to enjoy
- Four bubblers located around the track
- The centre field grass is TifTuf
- Off grid (solar) car park and footpath lighting



400m
SYNTHETIC TRACK

8 LANE TRACK
WITH A 10 LANE
FRONT STRAIGHT



200 LUX
COMPETITION AND
75 LUX TRAINING

PUBLIC TOILETS

8  4  4 

 **OUTDOOR FITNESS STATION**

 **MULTIPURPOSE FIELD (100X64M)**

 **OFFICIALS AREA**

 **108**
PARKING SPACES

 **6**
ACCESSIBLE PARKING SPACES

 **COACH PARKING**

 **PLAYGROUND**

 **CANTEEN**

 **PHYSIO/ DRUG TESTING ROOM**

 **STARTERS/ VIDEO BOX**

 **FIRST AID ROOM**

 **SECURITY KEYED VENUE**

 **GRANDSTAND + TIERED SEATING CAPACITY**
600

2
CHANGE ROOMS
(FULLY ACCESSIBLE)

6
STOREROOMS

4
MULTIPURPOSE ROOMS
(60,40,18 AND 9 CAPACITY)

1
KITCHENETTE

 **2** ICE BATHS

 **SMARTTRACKS**
INTELLIGENT TIME TRACKING SYSTEM





285 - 287 High Street
Maitland NSW 2320

t 02 4934 9700
f 02 4933 3209

info@maitland.nsw.gov.au
maitland.nsw.gov.au